



THE  
**FUNCTIONS AT BRIDGE**  
HOTEL

642 BRIDGE ROAD RICHMOND VIC 3121 • [www.thebridgehotel.com.au](http://www.thebridgehotel.com.au)

# GATHER AT THE BRIDGE

A Victorian pub with a cobblestone laneway running straight through the centre – it doesn't get more quintessentially Melbourne than this.

The Bridge Hotel cleverly merges dynamic design and inspired architecture with the warmth and comfort of a traditional Victorian pub to deliver the unique combination of an old school pub with new school thoughts.

With a collection of dynamic and unique spaces, the Bridge Hotel offers a broad range of options to suit a variety of events, sizes and budgets. From cocktail parties to corporate gatherings and intimate dinner parties, our friendly and professional team are on hand to make the process as easy as possible for you.

See which Bridge Hotel space will be ideal for you.

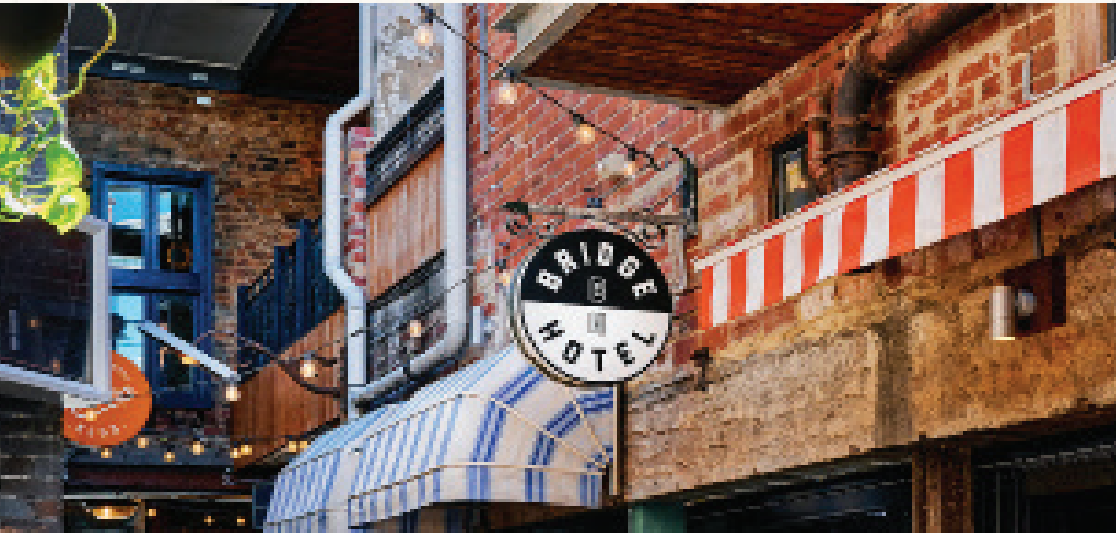
For more information, please contact our functions and events team at [functions@sandhillroad.com.au](mailto:functions@sandhillroad.com.au)



## THE STUDIO

The largest of our function spaces, The Studio holds up to 140 guests and comes complete with an exclusive bar, two large private balconies, two wide screen plasma TV's and a raised platform for speeches. The Studio and The Loft can combine to cater for parties of up to 200 people.

COCKTAIL	120	WHEELCHAIR	X
SIT-DOWN	X	WEATHER PROTECTION	✓
PRIVATE DJ	✓	PRIVATE BAR	✓
AV	✓		





# THE GARAGE

At the end of our Laneway, this semi private nook is in on the ground level. With two long bar tables and matching stools, this is the perfect interior to casually gather with friends before the DJ kicks off at 9pm in our laneway

COCKTAIL	30	WHEELCHAIR	X
SIT-DOWN	N/A	WEATHER PROTECTION	✓
PRIVATE DJ	X	PRIVATE BAR	X
AV	✓		



# THE LOFT

A space fit for a rockstar, The Loft caters for private parties of up to 70 guests. The space comes complete with an exclusive fully stocked bar, private balconies, plasma screen and a raised platform area for speeches. Available for hire any day or night of the week.

COCKTAIL	70	WHEELCHAIR	X
SIT-DOWN	N/A	WEATHER PROTECTION	✓
PRIVATE DJ	X	PRIVATE BAR	✓
AV	X		





## BRICK CORNER

Brick Corner is the perfect space for a larger group dining experience. Situated in the front half of our main ground floor restaurant, groups of 20-27 can enjoy our banquet menu while sitting amongst friends.

COCKTAIL	40	WHEELCHAIR	✓
SIT-DOWN	20-27	WEATHER PROTECTION	✓
PRIVATE DJ	X	PRIVATE BAR	X
AV	X		

## THE GREEN ROOM

The Green Room offers a cocktail style for 40-50 guests looking for a space close to the laneway, dance floor and bathrooms. The space is available for bookings any day of the week until 9pm.

COCKTAIL	40	WHEELCHAIR	✓
SIT-DOWN	N/A	WEATHER PROTECTION	✓
PRIVATE DJ	X	PRIVATE BAR	X
AV	✓		





# PRIVATE DINING ROOM

The Private Dining Room is the ideal space for an intimate lunch or dinner party. The semi private room seats 12-20 guests for a feasting menu (see page 6), complete with table service and direct access to the balcony.

COCKTAIL	X	WHEELCHAIR	X
SIT-DOWN	12-18	WEATHER PROTECTION	✓
PRIVATE DJ	X	PRIVATE BAR	X
AV	X		

# BUTTERFLY ROOM

This open-plan location offers flexible seating arrangements for functions of up to 36 guests or can be combined with Brick Corner for up to 62 guests.

COCKTAIL	N/A	WHEELCHAIR	✓
SIT-DOWN	36	WEATHER PROTECTION	✓
PRIVATE DJ	X	PRIVATE BAR	X
AV	X		







# SEATED MENU

MIN 10 PEOPLE

**\$45 PER PERSON**

2 Course - Shared Entrées + Mains

**\$10 PER PERSON**

Plated Dessert

## SHARED ENTRÉES

Pitta + Olives w. Tomato Kasundi (VG)

Pumpkin + Parmesan Croquettes w. Green Mayo (V, GF)

Prawn Cocktail w. Shredded Iceberg, Marie Rose + Lemon (GF)

## MAINS

Spaghetti Puttanesca w. Caper, Chilli + Parmesan (V)

Crispy Skin Barramundi w. Jasmine Rice, Bok Choy, Soy + Ginger Dressing (GF)

250g Grass-Fed Porterhouse w. Dressed Leaves, Chips + Café De Paris Butter (GF)

## DESSERT

Sticky Date Pudding w. Butterscotch Sauce + Vanilla Ice Cream (V, GF)

THE  
**BRIDGE**  
HOTEL

(V) Vegetarian (VO) Vegetarian Option (VG) Vegan (VGO) Vegan Option (GF) Gluten Free (GFO) Gluten Free Option (DF) Dairy Free

Seasonal Changes + Minimum Spends Apply



# STANDING MENU

MIN 20 PEOPLE

**\$25 PER PERSON**

5 Canapés

**\$35 PER PERSON**

6 Canapés + 1 Grazer

**\$45 PER PERSON**

6 Canapés + 2 Grazers + 1 Sweet

**Additional Canapés: \$5 Per Canapé + \$7 Per Grazer**

## COLD

Assorted Sushi, Soy Sauce + Wasabi (VGO, GF, DF)  
Kingfish Tartare, Chilli + Lime Mayo, Corn Tostada (GF)  
Potato + Thyme Tortilla, Smoked Paprika Aioli (V, GF)

## HOT

Beef + Pepper Berry Pie, House Made Ketchup  
Salami , Caramelised Onion, Thyme + Feta Pizza (V, GF)  
Mount Zero Falafel, Hummus, Sumac + Pomegranate (VG, GF)  
Tomato + Basil Arancini, Mozzarella, Herb Mayo (V, GF)  
Battered Prawns, Sweet + Sour Sauce (GF)  
Steamed Pork Bun, Sweet Soy + Crispy Shallots

## GRAZER

Roasted Broccoli Orecchiette w. Garlic, Chilli + Parmesan (V)  
Mini Fried Chicken Burgers, Chipotle Slaw  
Mini Toasted Ruben; Wagyu Pastrami, Pickles, Cheese  
Drunken Chicken Salad, Wombok, Asian Herbs, Soy + Ginger Dressing (GF)

## SWEETS

Lemon Meringue Pie (GF)  
Chocolate Brownie, Raspberry

THE  
**BRIDGE**  
HOTEL

(V) Vegetarian (VO) Vegetarian Option (VG) Vegan (VGO) Vegan Option (GF) Gluten Free (GFO) Gluten Free Option (DF) Dairy Free

Seasonal Changes + Minimum Spends Apply



# PLATTER MENU

SERVES APPROX. 20 PEOPLE

Platters are a crowd-pleaser and are perfect for any type of function or event.

## PLATTERS

**Flinders Island Single Origin Sourdough, House Made Dips (V) - \$30**

**Crispy Calamari, Old Bay Seasoning, Aioli + Lemon (GF) - \$50**

**Crispy Fried Chicken, Chipotle Ranch - \$55**

**Tomato + Basil Arancini, Mozzarella + Herb Mayo (V, GF) - \$50**

**Pork + Parmesan Sausage Rolls, Tomato Kasundi - \$55**

**Cheese Plate – 3 Cheese, Quince Paste, Dried Fruit + Crackers (V) - \$100**





# BEVERAGE PACKAGES

## BASIC

\$45 2 hours

\$55 3 hours

\$65 4 hours

## PREMIUM

\$50 2 hours

\$60 3 hours

\$70 4 hours

## BASIC

Ottillie Brut NV

Heatherlie Semillon Sauvignon Blanc 2020

Henry & Eliza's Shiraz Cabernet 2019

Cascade Light

Carlton Draught (on tap)

Mercury Cider (on tap)

Soft Drinks + Juices

## PREMIUM

The Hare & The Tortoise Prosecco NV

Mandoletto Pinot Grigio 2019

Eye Spy Rose 2020

Henry & Eliza's Shiraz Cabernet 2019

Cascade Light

All Tap Beers + Ciders

Soft Drinks + Juices

## ADD ONS

Seasonal Arrival Cocktail

\$10 per person

House Spirit

\$15 per person

Premium Spirit

\$25 per person

Local Bottled Beer

\$10 per person

International Bottled Beer

\$15 per person

# THE SAND HILL ROAD FAMILY



PRAHRAN HOTEL  
82 HIGH ST, PRAHRAN  
PRAHRANHOTEL.COM



HOLLIAVA  
BAR

36 SWAN ST, RICHMOND  
HOLLIAVA.COM.AU



WATERSIDE HOTEL

COMING SOON  
508 FLINDERS ST, MELBOURNE  
WATERSIDEHOTEL.COM.AU

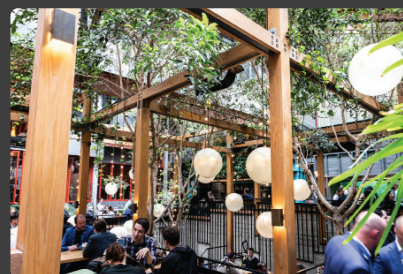


100 SWAN ST, RICHMOND  
RICHMONDCLUBHOTEL.COM.AU



POSTY  
BAR · PIZZA

90 SWAN ST, RICHMOND  
THEPOSTY.COM.AU



GARDEN  
STATE  
HOTEL

101 FLINDERS LN, MELBOURNE  
GARDENSTATEHOTEL.COM.AU



TERMINUS  
HOTEL

605 VICTORIA ST, ABBOTSFORD  
THETERMINUSHOTEL.COM.AU



HOTEL  
ESPLANADE  
18 — St. Kilda — 78

11 THE ESPLANADE, ST KILDA  
HOTELSPANADE.COM.AU

functions@sandhillroad.com.au